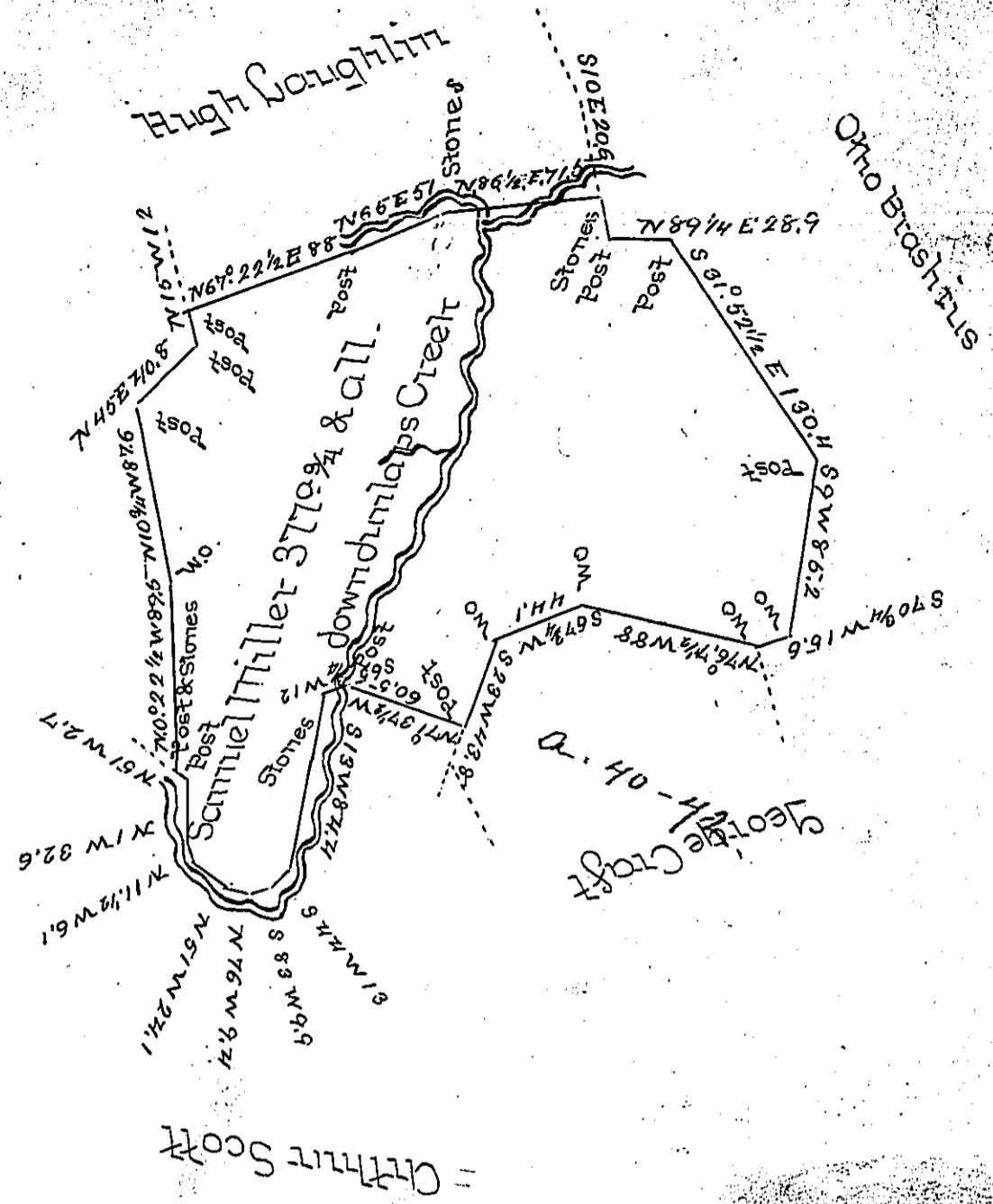


Note where it borders on the Creek. It is not to be bounded by the Creek as usual. The Creek in those places being included in the adjacent surveys to the top of the bank
AMClearn

DB889

Andrew Frazier



Situate on Dunlap's Creek in Manallin and Luzerne Townships Fayette County and surveyed the 17th day of June 1756 in pursuance of a warrant dated 3d June 1756 -

Alexander McClean Deputy

To Daniel Brodhead Esquire
Surveyor General -

IN TESTIMONY that the above is a copy of the original remaining on file in the Department of Internal Affairs of Pennsylvania, made conformably to an Act of Assembly approved the 16th day of February, 1833, I have hereunto set my Hand and caused the Seal of said Department to be affixed at Harrisburg, this sixth day of December 1898.

James W. Latta
Secretary of Internal Affairs.